

## EPDM Foam Fillers

09.2022

Celdex EPDM Foam Fillers are custom made profiled sealing products from closed-cell EPDM rubber. The products are applied as durable sealing for profiled steel roof and wall constructions or other applications that require customisation. EPDM Foam Fillers offer protection against moist, draught, dust, heat loss and noise.

### PROPERTIES

EPDM Foam Fillers enhance the quality of roof and wall constructions. They are well-resistant to UV and can easily be assembled. The foam fillers can be applied at higher ambient temperatures and/or within a corrosive environment. Suitable as sealing of metal roof- and wall constructions; sealing at the location of the connection of walls with profiled cladding. Applicable as a sealing and spacer in translucent constructions. Available in the colour black.

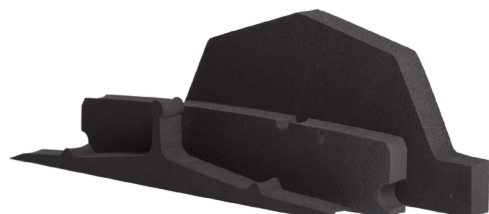
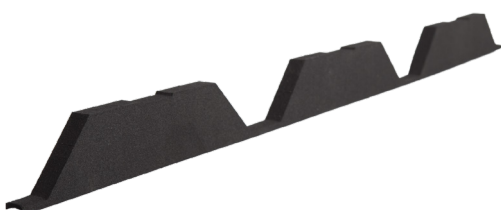
### CHARACTERISTICS

- Closed-cell EPDM rubber
- Quick and easy to install
- Wind, moist, pests and dirt-resistant
- UV-resistant and rot-free
- Makes roof and façade constructions more durable
- High mechanical resistance

- Custom made
- With or without adhesive backing
- Colour: black

### PROCESSING GUIDELINES

Thoroughly remove dust, dirt and grease from the substrate with neutral Celdex Cleaner. Position EPDM Foam Fillers receding at least 5 cm, near the fasteners. For easy installation it is possible to fit the foam fillers with adhesive backing, at the profile side and/or base side. The products are produced with oversize. In case of extreme deformation of roof and wall cladding, adjusted shapes can be produced to retain optimal sealing. For sloped constructions, slant-cut foam fillers can be applied. When good acoustic or fire-resistant properties are required, stone wool products should be used. As a protection in case of deterioration by birds and/or pests, PE Foam Fillers with an aluminium foil top layer can be applied.



## SAFETY

No specific safety guidelines exist for this product.

## MAINTENANCE INSPECTIONS

Possible damages to the sealing materials can be timely identified by performing periodic inspections. In order to prevent consequential damage, reconstruction works will be carried out in consultation with Celdex. Before any reconstruction works are carried out, it is essential to establish the cause of the damage to the sealing and to ask Celdex for additional advice. This can be done by means of targeted visual inspections or by assessing the damage in a laboratory.

## IN CASE OF DOUBT

When in doubt, or in case of deviating circumstances, you can contact our Technical Department. Would you prefer customised advice? Our technical consultants will be happy to help you.

## CELDEX

Celdex is a producer of synthetic foam products for construction, industry, sports & leisure. In addition to a wide range of standard products, we also provide customisation. Whichever product you choose, we produce everything in-house and use short delivery times. Celdex is the one discussion partner for airtight construction for architects, construction companies and the supplying industry. Our consultants have broad constructional know-how and think along about construction, use of material and critical connections. Our products can usually be applied prefab, which saves a lot of time and construction costs. Throughout the building process, we provide advice about the application and processing of our materials, aiming for optimal performance.

Discover our assortment:

- Foam fillers
- Stone wool products
- Single-sided and double-sided adhesive foam tapes
- Pre-compressed foam tapes
- Butyl tapes
- Fire-resistant products
- Anti-drumming materials
- Duct seals
- Tapes
- Polyurethane foams, elastic sealants and adhesives

## TECHNICAL DATA

Density	130 -170 kg/m <sup>3</sup>
Shore hardness (00)	40-50
Colour	Black
Fire behaviour (FMVSS 302)	< 100 mm/min
Airtightness (NEN/EN 12207)	Class 4
Airtightness (NEN 2687)	Class 3
Thermal conductivity	0.034 W/mK
Water absorption	Max. < 2 %
Tensile strength	> 500 kPa
Elongation at break	> 180 %
Service temperature range	-30 °C to +90 °C (short term +130 °C)
Available thicknesses	30 mm / others on request
Joint type	Heavily profiled (custom made)
UV-resistance	Good
Shelf life at storage temperature 20 °C	12 months in closed package

*The data on this product data sheet was represented as complete and as correctly as possible, but cannot constitute any guarantee. When in doubt, please consult one of our specialists. The application method, as also the application conditions will be your own responsibility. Deliveries will take place exclusively in conformity with our General Delivery and Payment Conditions.*