

## PU 35 Soft

04.2023

Celdex PU 35 Soft is a very soft semi-closed-cell polyurethane foam with excellent insulating properties. The product is suitable as a thermal insulation for irregular surfaces. The product is applicable in a variety of joint connections.

### PROPERTIES

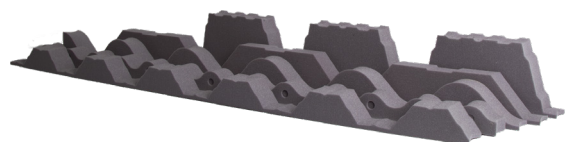
PU 35 Soft is very easy to apply and is available in various variations, with or without adhesive backing. Available on sheet, roll and as custom punch parts. Available in the colour grey. This product complies with specifications, such as thermally and acoustically insulating.

### CHARACTERISTICS

- Very soft semi-closed-cell polyurethane foam
- Easily compressible
- Available on sheet, roll and as custom punch parts
- With or without adhesive backing
- Prevents thermal leakage
- Sound absorbing
- Not UV-resistant
- Colour: grey

### PROCESSING GUIDELINES

Thoroughly remove dust, dirt and grease from the substrate with neutral Celdex Cleaner. Use the correct size for every joint width. When using PU 35 Soft, ensure to keep it away from direct sunlight and water. Always apply the self-adhesive side to the most even substrate, while preventing air entrapment. The product can be applied to untreated wood without the need for a primer. Below 10 °C the adhesive has reduced adhesive strength. The product should be applied unstretched. In corners the PU 35 Soft should be cut and re-joined with overlength in a 90° angle with overlength, glue butt joints using contact adhesive. In case of exterior corners (of frames) apply an overlap and press PU 35 Soft together on the adhesive layer. After application apply extra pressure with the Celdex Pressure Roller.



## SAFETY

No specific safety guidelines exist for this product.

## MAINTENANCE INSPECTIONS

Possible damages to the sealing materials can be timely identified by performing periodic inspections. In order to prevent consequential damage, reconstruction works will be carried out in consultation with Celdex. Before any reconstruction works are carried out, it is essential to establish the cause of the damage to the sealing and to ask Celdex for additional advice. This can be done by means of targeted visual inspections or by assessing the damage in a laboratory.

## IN CASE OF DOUBT

When in doubt, or in case of deviating circumstances, you can contact our Technical Department. Would you prefer customised advice? Our technical consultants will be happy to help you.

## CELDEX

Celdex is a producer of synthetic foam products for construction, industry, sports & leisure. In addition to a wide range of standard products, we also provide customisation. Whichever product you choose, we produce everything in-house and use short delivery times. Celdex is the one discussion partner for airtight construction for architects, construction companies and the supplying industry. Our consultants have broad constructional know-how and think along about construction, use of material and critical connections. Our products can usually be applied prefab, which saves a lot of time and construction costs. Throughout the building process, we provide advice about the application and processing of our materials, aiming for optimal performance.

Discover our assortment:

- Foam fillers
- Stone wool products
- Single-sided and double-sided adhesive foam tapes
- Pre-compressed foam tapes
- Butyl tapes
- Fire-resistant products
- Anti-drumming materials
- Duct seals
- Tapes
- Polyurethane foams, elastic sealants and adhesives

## TECHNICAL DATA

Density	Approx. 34 kg/m <sup>3</sup>
Compression force	5 kPa
Colour	Grey
Fire behaviour (FMVSS 302)	< 100 mm/min
Thermal conductivity	0.033 W/mK
Tensile strength (ISO 1798)	130 kPa
Elongation at break (ISO 1798)	160 %
Durability	Poor
Service temperature range	-40 °C to +120 °C
Available thicknesses	15, 20, 25, 30 and 40 mm / others on request
Joint type	Uneven, tapered
UV-resistance	Not UV-resistant
Shelf life at storage temperature 20 °C	12 months in closed package

*The data on this product data sheet was represented as complete and as correctly as possible, but cannot constitute any guarantee. When in doubt, please consult one of our specialists. The application method, as also the application conditions will be your own responsibility. Deliveries will take place exclusively in conformity with our General Delivery and Payment Conditions.*