



Pre-Seal M LF

04.2022

Pre-Seal M LF is a semi-closed cell polyurethane foam tape that features an airtight membrane and a low-friction top layer. The product has been specially developed for scaffold-free construction with prefab concrete sandwich and timber frame elements. Pre-Seal M LF combines minimum compression with maximum airtightness within a wide joint range. The product is airtight, acoustically and thermally insulating.

PROPERTIES

Pre-Seal M LF is designed to meet the highest airtightness requirements with limited compression (10 %). In order to position building elements easily, the product has a 'low-friction' top layer. Pre-Seal M LF is part of the Seal4Prefab sealing system for prefab construction & industry and has been independently tested within system combinations for durability, airtightness and resistance to driving rain. Ideally suited for Industrial, Flexible and Demountable construction.

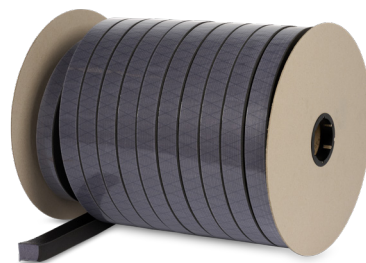
CHARACTERISTICS

- Semi-closed-cell polyurethane foam
- Equipped with airtight membrane
- Equipped with low-friction top layer
- Compressible
- Large functional joint area
- Thermal and acoustic insulation
- Not UV-resistant
- Available on roll and reel

- With or without adhesive backing
- Foam colour: grey
- Membrane colour: black

PROCESSING GUIDELINES

Thoroughly remove dust, dirt and grease from the substrate with neutral Celdex Cleaner. Use the correct tape size for every joint width. When using Pre-Seal M LF, ensure that it is free from UV or water burden. Always apply the self-adhesive side to the most even substrate and prevent air entrapment. Pre-Seal M LF can be applied to untreated wood without the need for a primer. When the temperature is below 10 °C, the self-adhesive layer has a reduced initial adhesive strength. Apply the foam tape without tension. The product obtains its sealing properties by compression. For air sealing and thermal and acoustic insulation, compress at least 10%. Straight cut tape can be compressed with overlength. Glue butt joints using contact adhesive (art 950000010A). When adhering directly to concrete, pre-treat with Celdex Primer. After application apply extra pressure with the Celdex Pressure Roller.



Seal4Prefab

Pre-Seal M LF is part of the Seal4Prefab sealing system. The system consists of an airtight, insulating and driving rain seal. Seal4Prefab has been specifically developed for the prefabricated construction & industry.

SAFETY

No specific safety guidelines exist for this product.

MAINTENANCE INSPECTIONS

Possible damages to the sealing materials can be timely identified by performing periodic inspections. In order to prevent consequential damage, reconstruction works will be carried out in consultation with Celdex. Before any reconstruction works are carried out, it is essential to establish the cause of the damage to the sealing and to ask Celdex for additional advice. This can be done by means of targeted visual inspections or by assessing the damage in a laboratory.

IN CASE OF DOUBT

When in doubt, or in case of deviating circumstances, you can contact our Technical Department. Would you prefer customised advice? Our technical consultants will be happy to help you.

CELDEX

Celdex is a producer of synthetic foam products for construction, industry, sports & leisure. In addition to a wide range of standard products, we also provide customisation. Whichever product you choose, we produce everything in-house and use short delivery times. Celdex is the one discussion partner for airtight construction for architects, construction companies and the supplying industry. Our consultants have broad constructional know-how and think along about construction, use of material and critical connections. Our products can usually be applied prefabricated, which saves a lot of time and construction costs. Throughout the building process, we provide advice about the application and processing of our materials, aiming for optimal performance.

Discover our assortment:

- Foam fillers
- Stone wool products
- Single-sided and double-sided adhesive foam tapes
- Pre-compressed foam tapes
- Butyl tapes
- Fire-resistant products
- Anti-drumming materials
- Duct seals
- Tapes
- Polyurethane foams, elastic sealants and adhesives

TECHNICAL DATA

Density	31-37 kg/m ³
Compression force	9-14 kPa
Foam colour	Grey
Membrane colour	Black
Airtightness (NEN-EN 12114) 10 % compression at 1000Pa	0.23m ³ /h.m (SHR 21.0352-1)
Airtightness (NEN-EN 12114) 25 % compression at 1000Pa	<0.01m ³ /h.m (SHR 21.0352-1)
Airtightness C-Value (NEN 2686) at 10 % compression	0.00007 dm ³ /s.m1.Pa ⁿ (SHR 21.0352-1)
Airtightness C-Value (NEN 2686) at 25 % compression	<0.00001 dm ³ /s.m1.Pa ⁿ (SHR 21.0352-1)
Airborne sound insulation (ISO 10140-2:2012) (Rw)	42 (-1;-1) dB
Windproof and resistance to driving rain (NEN-EN 12207-12208-12114)*	Airtightness 1000 Pa - 0.36 m3/h.m Resistance to driving rain 1200 Pa (SHR 21.0047-4)
Durability	BRL 2804-1 aging
Service temperature range	-40 °C to +120 °C
Thermal conductivity	0.033 W/mK
Permanent deformation (ISO 1865) 22h/70 °C	8.5 %
Elongation at break (ISO 1798)	> 145 %
Tensile strength (ISO 1798)	165 kPa
Available thicknesses	20, 25, 30 en 40 mm / others on request
UV-resistance	Poor
Joint type	All joint types possible
Aging	Changes colour
Shelf life at storage temperature 20 °C	12 months in closed package

* Tested within a system combination of Seal4Prefab, report on request.

The data on this product data sheet was represented as complete and as correctly as possible, but cannot constitute any guarantee. When in doubt, please consult one of our specialists. The application method, as also the application conditions will be your own responsibility. Deliveries will take place exclusively in conformity with our General Delivery and Payment Conditions.