



## Airseal Tape Black

03.2026

Celdex Airseal Tape Black is a single-sided, strong aggressive adhesive PE tape. Airseal Tape Black is designed specifically for the creation of durable airtight connections to PE vapour barriers, on wooden sub constructions, the taping of frames in timber frame constructions and the taping of joint details of roof elements.

### PROPERTIES

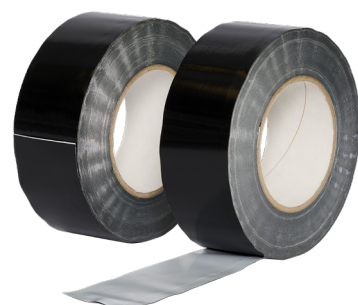
Airseal Tape Black is specifically designed for the creation of weather resistant durable airtight connections to PE vapour barriers, on wooden sub constructions, the taping of frames in timber frame constructions and the taping of joint details of roof elements. Adheres well to PE foil and HDPE/PP/PE film. The release liner can be removed in two components, which makes it easier to apply it inside corners. The tape complies with the strict requirements of EnEV (DIN 4108-7), with regard to permanent airtight sealing.

### CHARACTERISTICS

- Extremely strong adhesive power
- High initial adhesive power
- Joint release liner
- Suitable for outdoor applications
- Durable airtight sealing
- Energy-efficient
- Complies with EnEV (DIN 4108-7)

### PROCESSING GUIDELINES

Thoroughly remove dust, dirt and grease from the substrate. After tension-free application of the Airseal Tape Black, press the tape firmly, manually or by use of the Celdex Pressure Roller. In case of porous or absorbing substrates, like (fibre-reinforced) plasterboard, perform adhesion tests in advance. The release liner can be removed as two components, which makes it easier to apply it inside corners. For better adhesion, the substrate can be pre-treated with Celdex Primer. The adhesion properties will deteriorate when the temperature gets below 10 °C. Store the product cool and dry in its original packaging.



## SAFETY

No specific safety guidelines exist for this product.

## MAINTENANCE INSPECTIONS

Possible damages to the sealing materials can be timely identified by performing periodic inspections. In order to prevent consequential damage, reconstruction works will be carried out in consultation with Celdex. Before any reconstruction works are carried out, it is essential to establish the cause of the damage to the sealing and to ask Celdex for additional advice. This can be done by means of targeted visual inspections or by assessing the damage in a laboratory.

## IN CASE OF DOUBT

When in doubt, or in case of deviating circumstances, you can contact our Technical Department. Would you prefer customised advice? Our technical consultants will be happy to help you.

## CELDEX

Celdex is a producer of synthetic foam products for construction, industry, sports & leisure. In addition to a wide range of standard products, we also provide customisation. Whichever product you choose, we produce everything in-house and use short delivery times. Celdex is the one discussion partner for airtight construction for architects, construction companies and the supplying industry. Our consultants have broad constructional know-how and think along about construction, use of material and critical connections. Our products can usually be applied prefab, which saves a lot of time and construction costs. Throughout the building process, we provide advice about the application and processing of our materials, aiming for optimal performance.

Discover our assortment:

- Foam fillers
- Stone wool products
- Single-sided and double-sided adhesive foam tapes
- Pre-compressed foam tapes
- Butyl tapes
- Fire-resistant products
- Anti-drumming materials
- Duct seals
- Tapes
- Polyurethane foams, elastic sealants and adhesives

## TECHNICAL DATA

Adhesive carrier	LDPEco foil, reinforced with scrim
Colour	Black
Adhesive	Acrylic
Release liner	80 m $\mu$ PP foil white, shared in 10 and 40 mm
Thickness (without release liner)	0.30 – 0.33 mm
Width	50 mm, others on request
Peel strength (DIN EN 1939)	$\geq$ 25 N/25 mm
Tensile strength (DIN EN 14410)	$\geq$ 25 N/25 mm; 300 %
Air Permeability (DIN 18542)	< 0.1
Fire class (DIN EN 13501-1)	Class E
Service temperature range	-40 °C to +100 °C
Application temperature	+5 °C recommended, processable from -10 °C
UV-resistance	Good
Condensation water resistance	Very high
EnEV (DIN 4108-7)	Satisfies
Ageing resistant	Very high
Shelf life at storage temperature 20 °C	12 months in closed package

*The data on this product data sheet was represented as complete and as correctly as possible, but cannot constitute any guarantee. When in doubt, please consult one of our specialists. The application method, as also the application conditions will be your own responsibility. Deliveries will take place exclusively in conformity with our General Delivery and Payment Conditions.*